

ROAD INDEX

I	RADCLIFFE RD. B1 F1
J	BASCOMBE RD. F2, F4 BRAKEMAN RD. D1, D4 BROWN RD. B2, B4
K	SAWMILL DR. C4 C5 SISSON RD. E6 G6 SUMNER RD. F1 F2 KILE RD. G2, G6
L	TAYLORWELLS RD. C6
M	
N	VENUS RD. E3, E4
O	WILLIAMS RD. E1, E3 WOODIN RD. A4, D4 WILDWOOD DR. B3 WILLOW LANE D1
P	OLD STATE RD. B1, E6 PEARL RD. A2, C2
Q	G.A.R. (U.S. 6) A5, G4 GRANT ST. A5 HIGH COUNTRY DR. E4 HOLI-DALE DR. C6

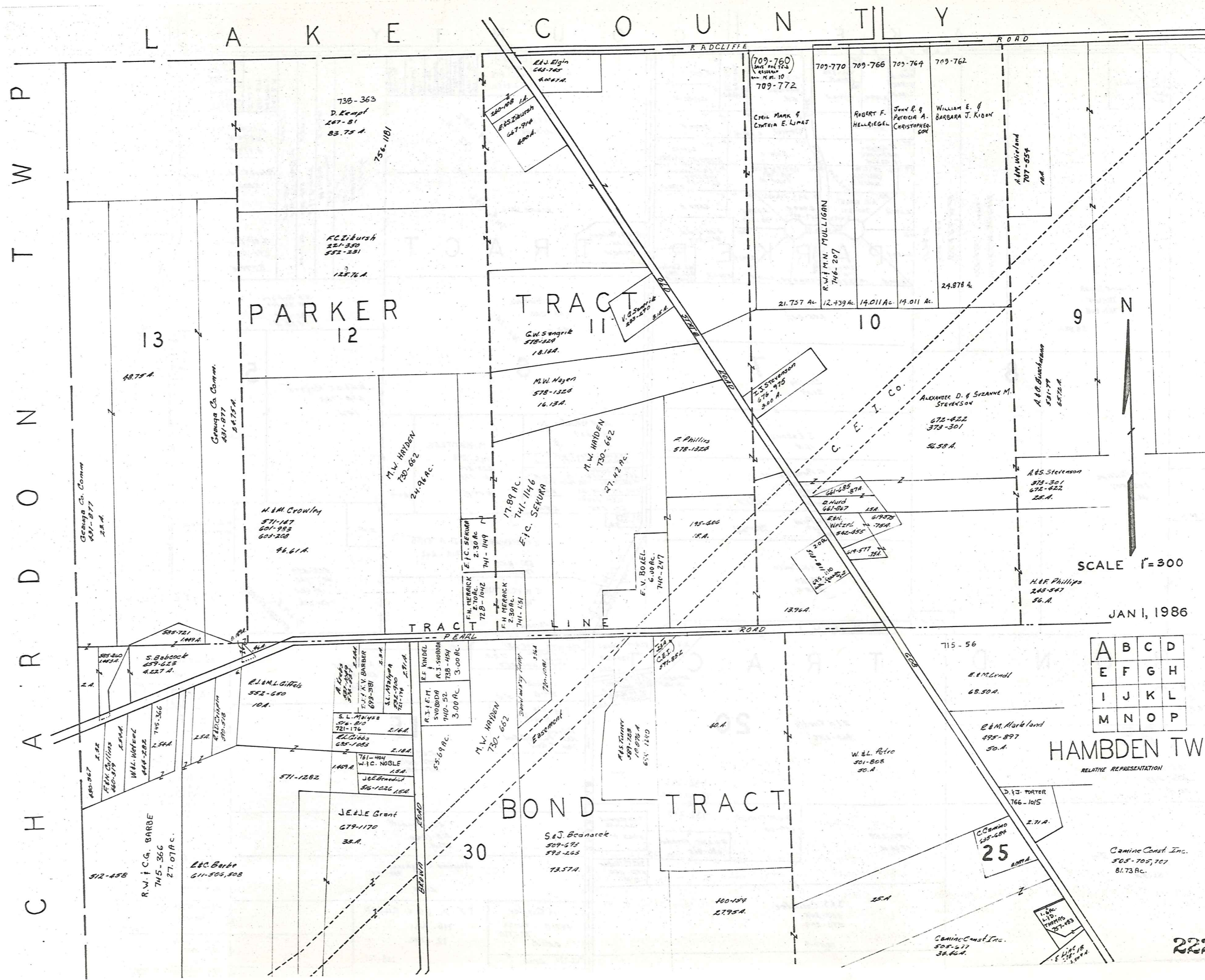
- ① HAMBDEN ELEMENTARY SCHOOL
- ② HAMBDEN CONGREGATIONAL CH.
- ③ CHRISTIAN & MISSIONARY ALLIANCE CH.
- ④ HAMBDEN CEMETERY
- ⑤ HAMBDEN VOL. FIRE DEPT.
- ⑥ HAMBDEN TOWN HALL

HAMBDEN TOWNSHIP

SCALE - 1" = 2000'

ROBERT T. PHILLIPS
GEAUGA COUNTY ENGINEER

- UNPAVED ROAD
- PAVED ROAD
- COUNTY LINE
- RAILROAD
- TOWNSHIP LINE
- CORPORATION LINE



C H A R D O N
 T W P
 L A K E
 C O U N T Y

PARKER
12

TRACT II

BOND TRACT

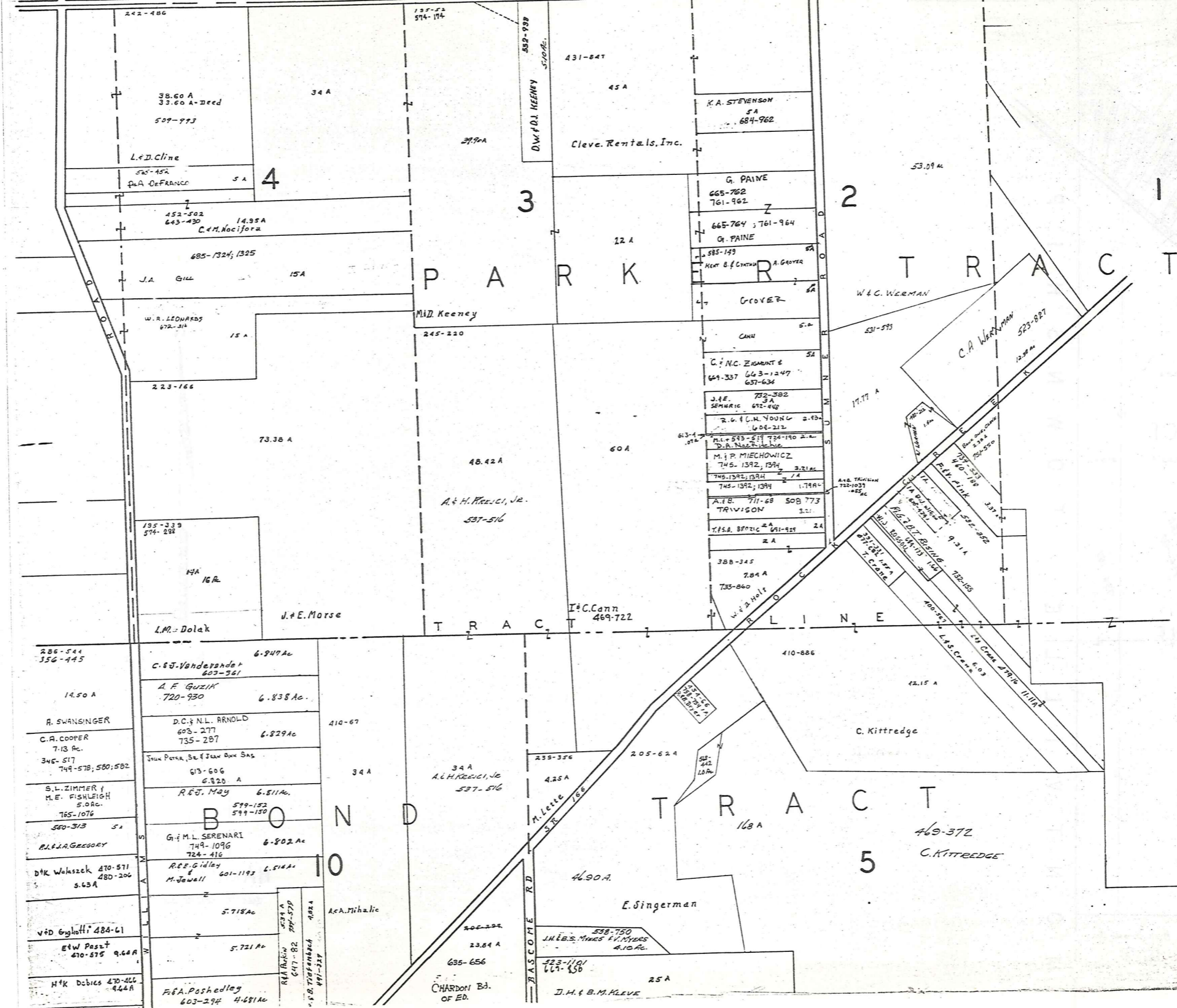
A	B	C	D
E	F	G	H
I	J	K	L
M	N	O	P

HAMBDEN TWP
RELATIVE REPRESENTATION

SCALE 1"=300

JAN 1, 1986

L A K E C O U N T Y

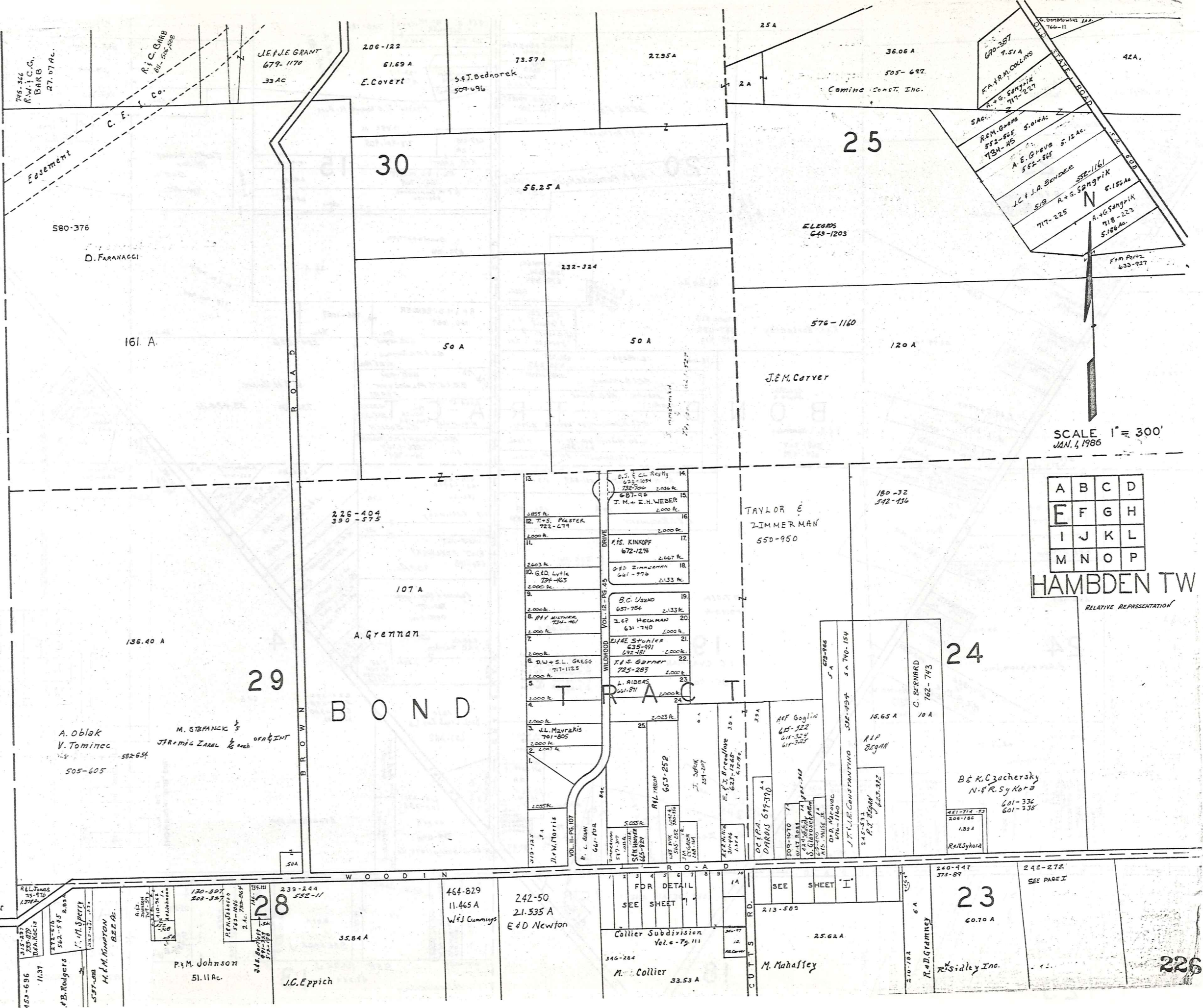


SCALE 1" = 300'
JAN. 1, 1986

A	B	C	D
E	F	G	H
I	J	K	L
M	N	O	P

HAMB DEN TWP.
RELATIVE REPRESENTATION

C H A R D O N T O W N S H I P



SCALE 1" = 300'
JAN. 1, 1986

A	B	C	D
E	F	G	H
I	J	K	L
M	N	O	P

HAMB DEN TW
RELATIVE REPRESENTATION

F. E. Covert

453-696
1137
B. Rodgers
537-000
H. M. Kingston
B. E. A.

170-507
203-357
P. M. Johnson
51.11 Ac.

239-244
532-11
J. C. Eppich

464-829
11.465 A
W. J. Cummings

242-50
21.535 A
E. D. Newton

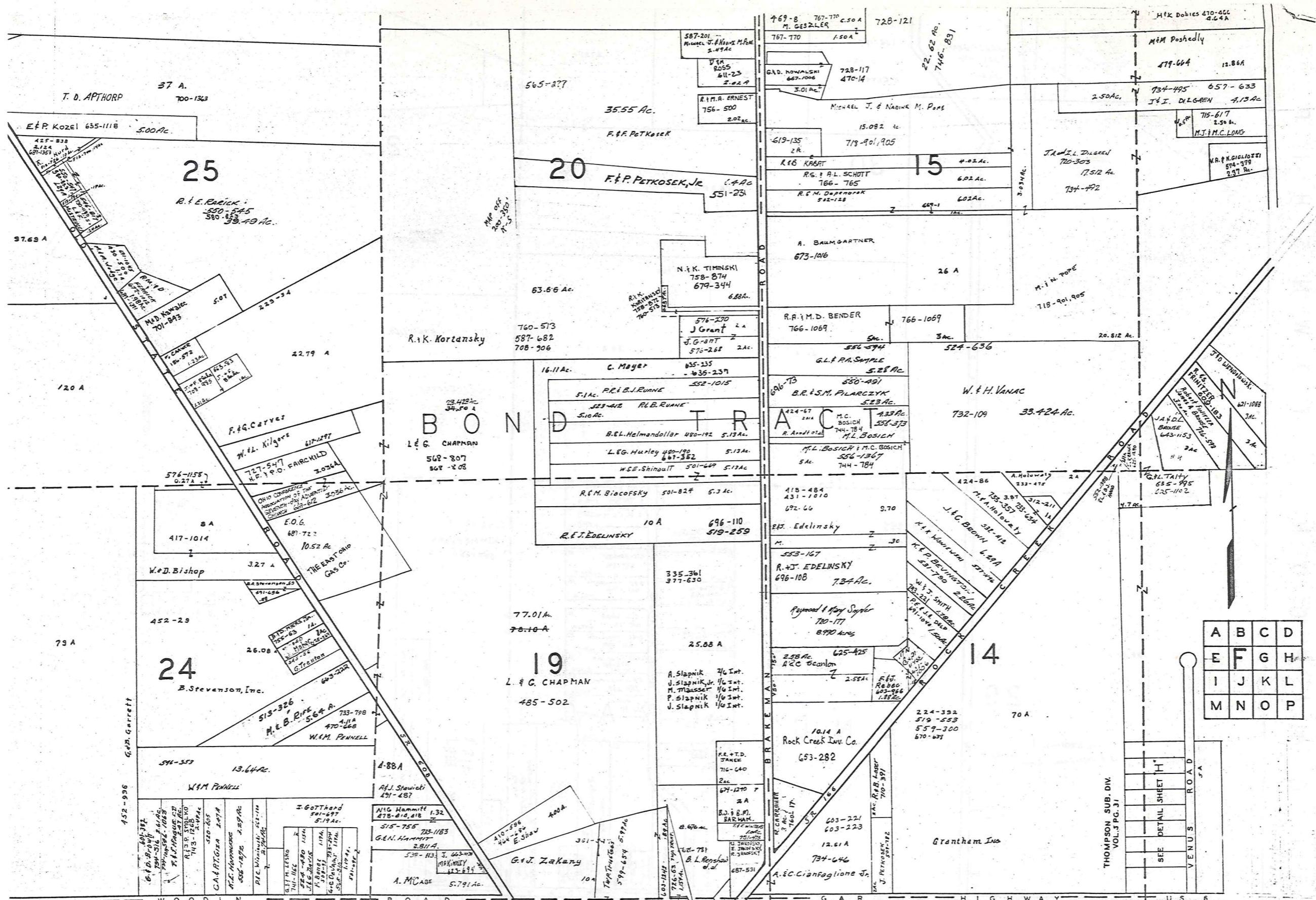
340-284
M. Collier
33.53 A

213-500
M. Mahaffey

240-447
373-89
R. D. Grammey
R. Sidley Inc.

242-272
SEE PAGE I

226



B O N D T R A C T

A	B	C	D
E	F	G	H
I	J	K	L
M	N	O	P

HAMB DEN TWP
 SCALE = 1" = 300'
 JAN 1, 1986
 RELATIVE REPRESENTATION

SEE DETAIL SHEET 7 CTR

SEE PAGE J

SEE PAGE J

SEE PAGE J

SEE PAGE J

SEE PAGE J

SEE PAGE J

SEE PAGE J

SEE PAGE J

SEE PAGE J

SEE PAGE J

SEE PAGE J

SEE PAGE J

SEE PAGE J

SEE PAGE J

SEE PAGE J

SEE PAGE J

SEE PAGE J

SEE PAGE J

SEE PAGE J

SEE PAGE J

SEE PAGE J

SEE PAGE J

SEE PAGE J

SEE PAGE J

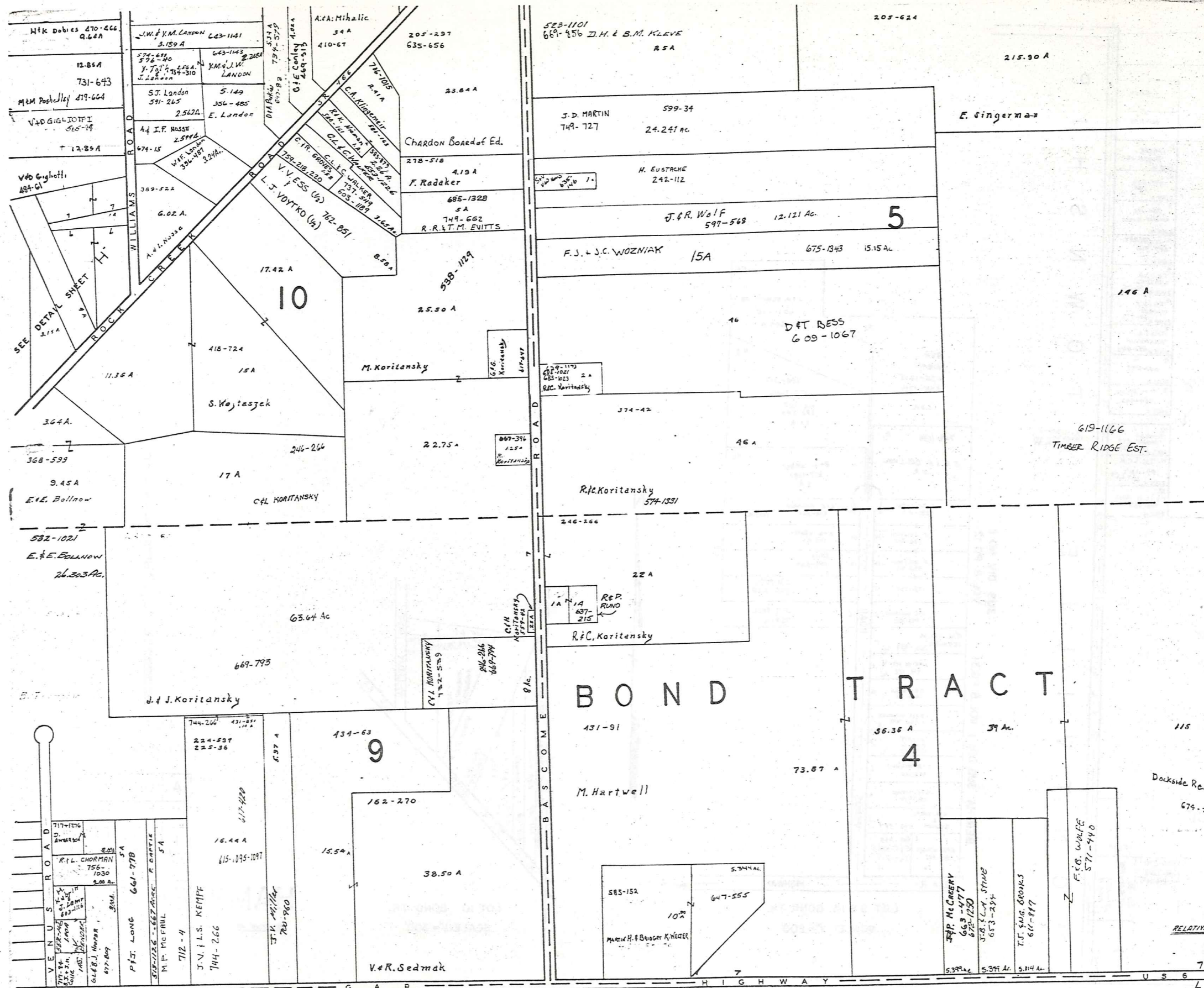
SEE PAGE J

SEE PAGE J

SEE PAGE J

SEE PAGE J

SEE PAGE J



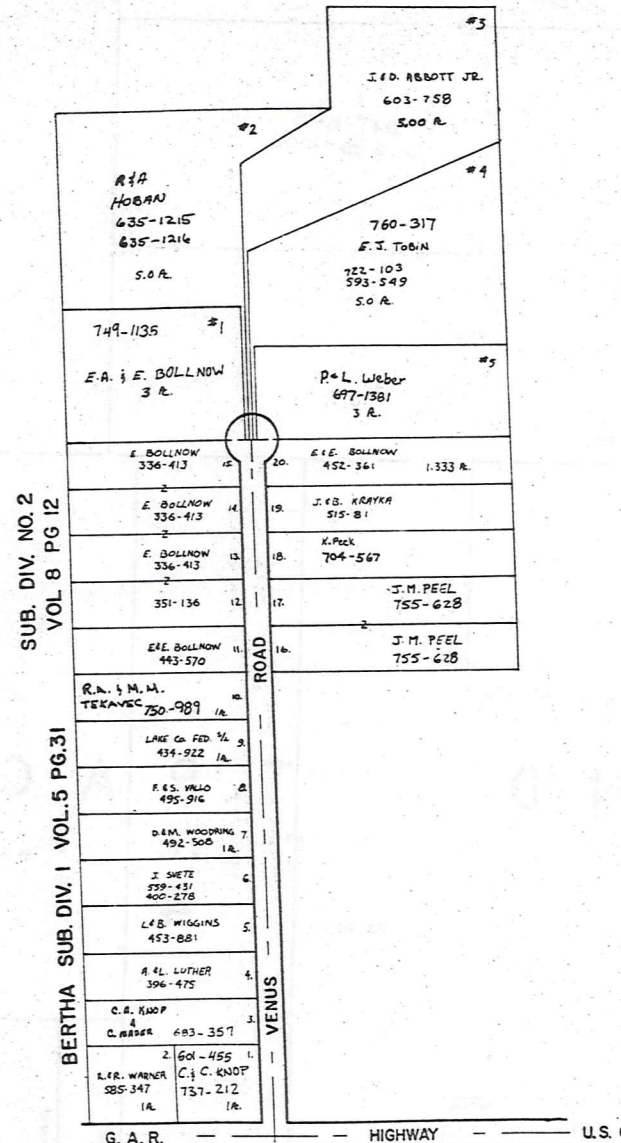
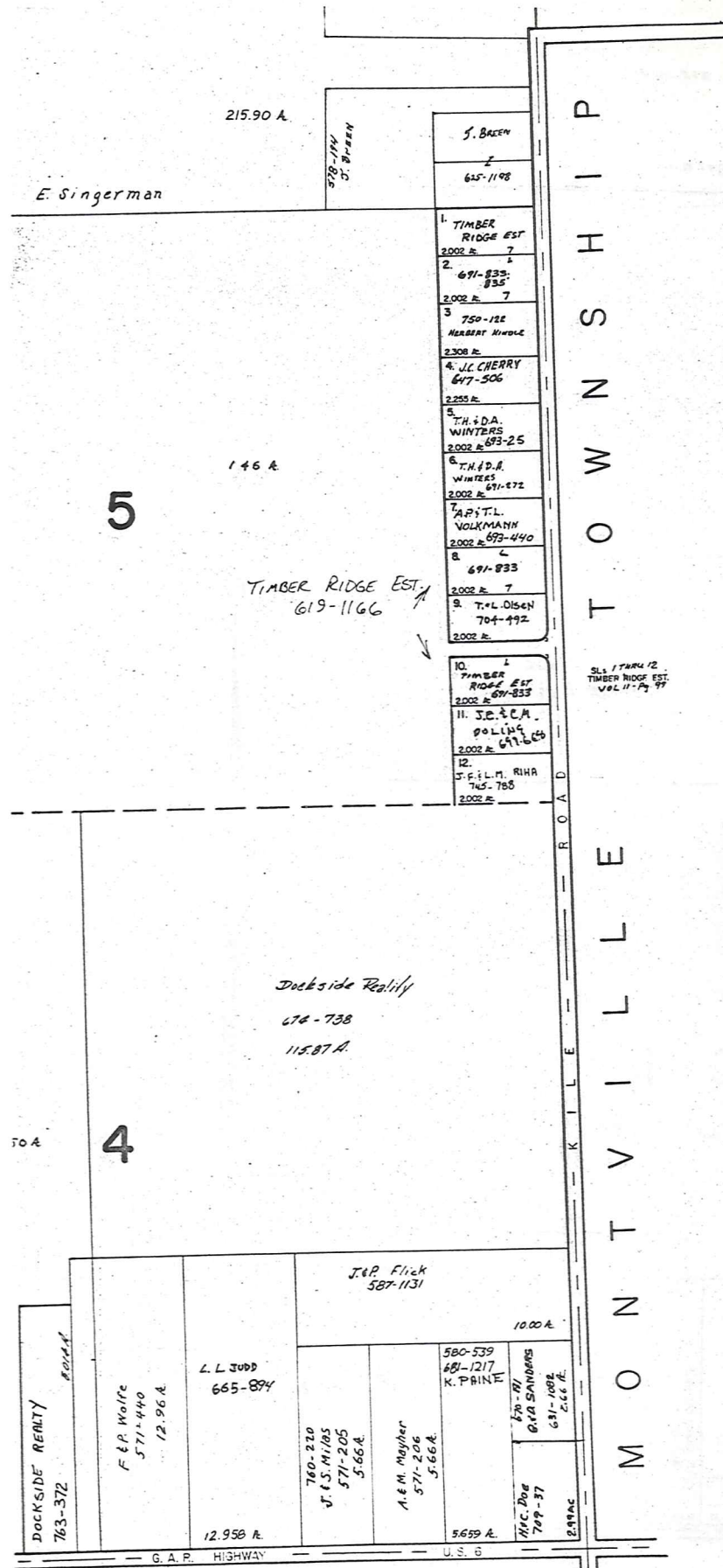
SCALE 1" = 300'

A	B	C	D
E	F	G	H
I	J	K	L
M	N	O	P

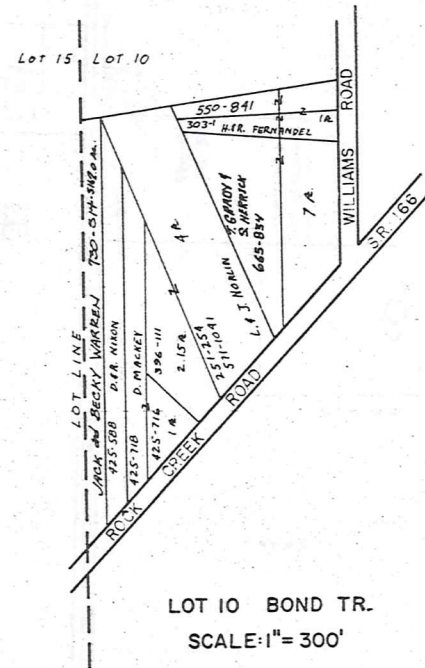
HAMBDEN TWP.
JAN 1, 1986

RELATIVE REPRESENTATION

SEE PAGE "K"



LOT 9 & 14, BOND TR.
SCALE: 1" = 200'

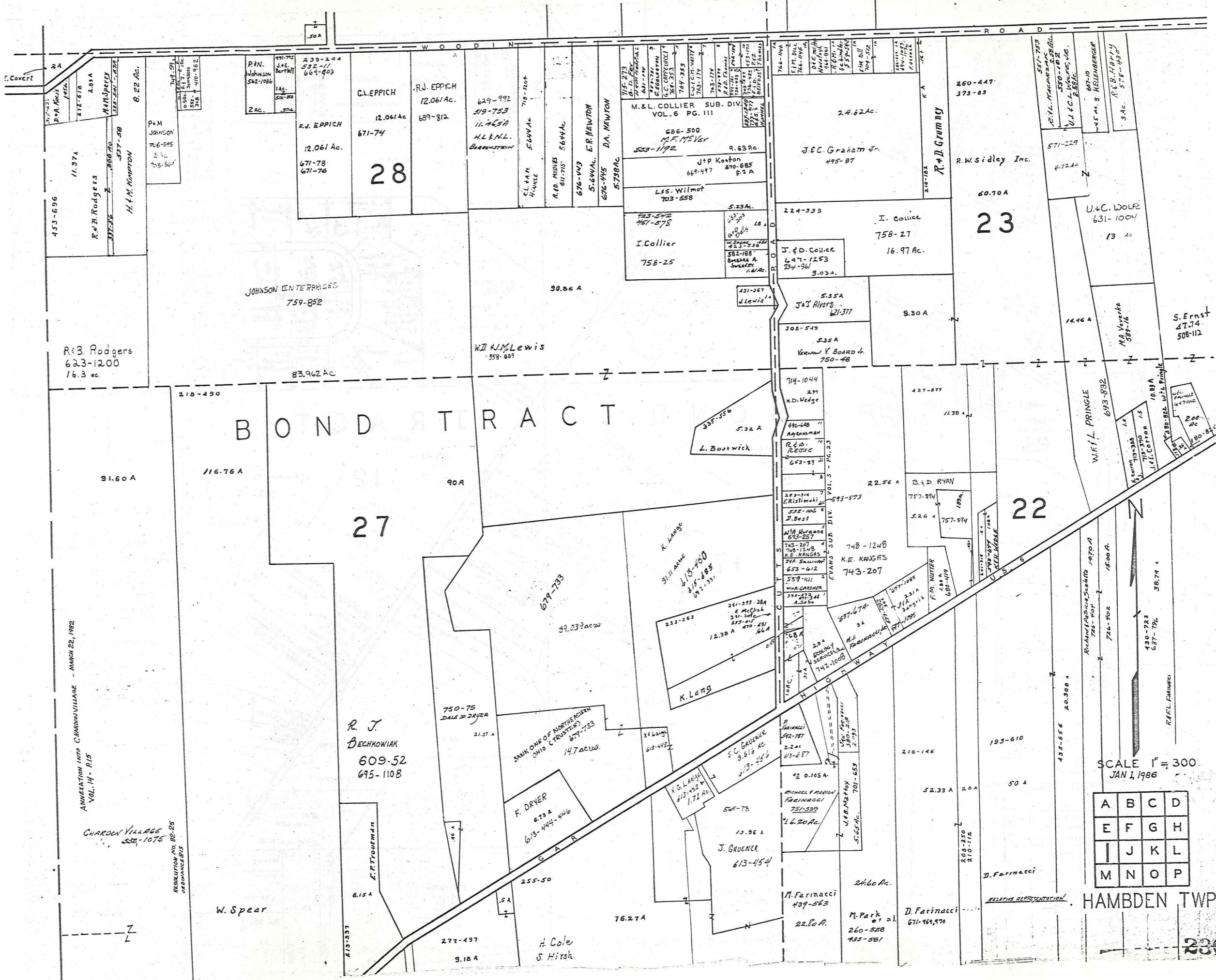


LOT 10 BOND TR.
SCALE: 1" = 300'

N
SCALE 1" = 300'
JAN. 1, 1986

A	B	C	D
E	F	G	H
I	J	K	L
M	N	O	P

HAMB DEN TWP.
RELATIVE REPRESENTATION



ANNEXATION INTO CHARDON VILLAGE - MARCH 22, 1982
VOL. 14 - P. 15

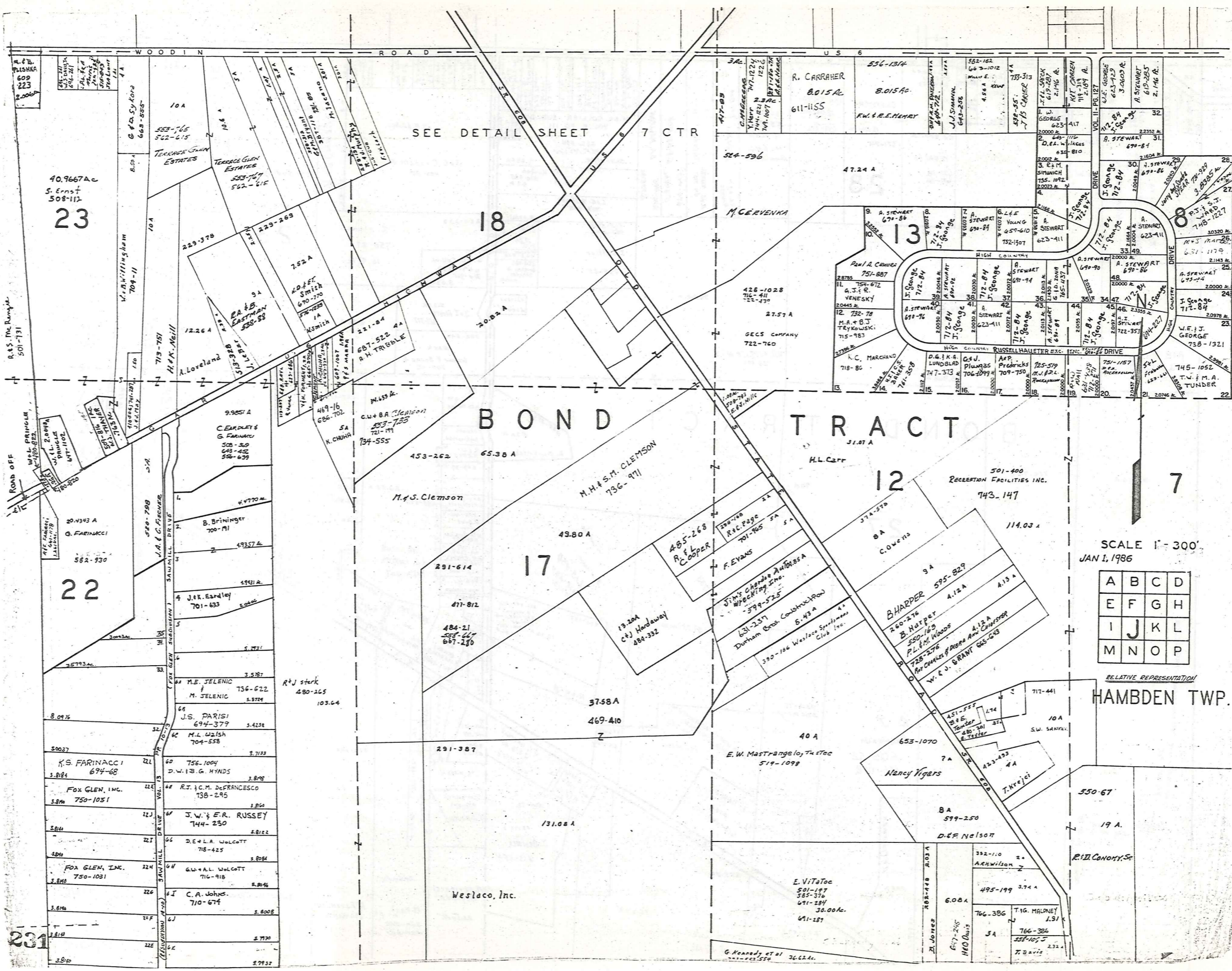
CHARDON VILLAGE
331-1075
RESOLUTION NO. 82-25
ORDINANCE 813

BOND TRACT

SCALE 1" = 300
JAN 1, 1986

A	B	C	D
E	F	G	H
I	J	K	L
M	N	O	P

HAMB DEN TWP.



SEE DETAIL SHEET 7 CTR

BOND TRACT

SCALE 1" = 300'
JAN 1, 1986

A	B	C	D
E	F	G	H
I	J	K	L
M	N	O	P

RELATIVE REPRESENTATION
HAMBDEN TWP.

40.9667Ac
S. Ernst
508-112
23

20.4343 A
Q. FARINACCI
582-930
22

231

Weslaco, Inc.

R. D. CONROY, Sr.

E. VitaToe
501-177
585-376
611-284
30.00Ac.
611-187

6.08A
617-256
HED Davis

T. G. MALONEY
1.51A
766-386
588-107
T. Davis

10A
553-765
562-615
TERRACE GLEN ESTATES

229-378
229-269
7.52A
N.D. & F. Smith
690-770

12.26A
A. Loveland
713-751

9.9851A
C. EARDLEY & G. FARINACCI
508-509
613-452
558-639

4.4770A
B. Bringer
700-711

4.931A
J.K. Eardley
701-633

3.571A
M.E. JELENIC & M. JELENIC
736-622

3.423A
J.S. PARISI
694-379

3.713A
756-1004
D.W. & G. HYNDS

3.878A
R.J. & C.M. DeFRANCESCO
738-295

3.860A
J.W. & F.R. RUSSEY
744-230

3.808A
D.E. & L.A. WOLCOTT
718-425

R+J stork
480-265
103.64

3.808A
C.A. Johns
710-674

M. & S. Clemson

M.H. & S.M. CLEMSON
736-971

M. GERVENKA

428-1028
712-411
22-430
27.57A
GECs COMPANY
722-760

H.L. Carr

R.C. Page
701-705

F. EVANS

Jim's Charles Auto Sales
WRECKING, Inc.
599-525

390-186
Westlaco Sportsman's Club, Inc.

E.W. Mastrangelo, Trustee
519-1098

Nancy Nigars

D.E. Nelson

G. Kennedy et al
766-224

Paul A. Canine
751-887

K.C. MARCHAND
718-86

D.G. & K.A. LUNDBLAD
747-373

C.J. PLUMMER
706-1944

A.P. FREDRICKS
725-519

B. HARPER
595-829

P.L. & M. Woods
728-276

W. R. J. BRANT
685-613

392-110
A. H. Wilson

495-199
3.74A

766-386
T.G. MALONEY
1.51A

766-386
588-107
T. Davis

A. STEWART
670-86

A. STEWART
670-94

A. STEWART
670-94

A. STEWART
670-94

A. STEWART
670-94

A. STEWART
670-94

A. STEWART
670-94

A. STEWART
670-94

A. STEWART
670-94

A. STEWART
670-94

A. STEWART
670-94

A. STEWART
670-94

A. STEWART
670-86

A. STEWART
670-94

A. STEWART
670-94

A. STEWART
670-94

A. STEWART
670-94

A. STEWART
670-94

A. STEWART
670-94

A. STEWART
670-94

A. STEWART
670-94

A. STEWART
670-94

A. STEWART
670-94

A. STEWART
670-94

A. STEWART
670-86

A. STEWART
670-94

A. STEWART
670-94

A. STEWART
670-94

A. STEWART
670-94

A. STEWART
670-94

A. STEWART
670-94

A. STEWART
670-94

A. STEWART
670-94

A. STEWART
670-94

A. STEWART
670-94

A. STEWART
670-94

A. STEWART
670-86

A. STEWART
670-94

A. STEWART
670-94

A. STEWART
670-94

A. STEWART
670-94

A. STEWART
670-94

A. STEWART
670-94

A. STEWART
670-94

A. STEWART
670-94

A. STEWART
670-94

A. STEWART
670-94

A. STEWART
670-94

A. STEWART
670-86

A. STEWART
670-94

A. STEWART
670-94

A. STEWART
670-94

A. STEWART
670-94

A. STEWART
670-94

A. STEWART
670-94

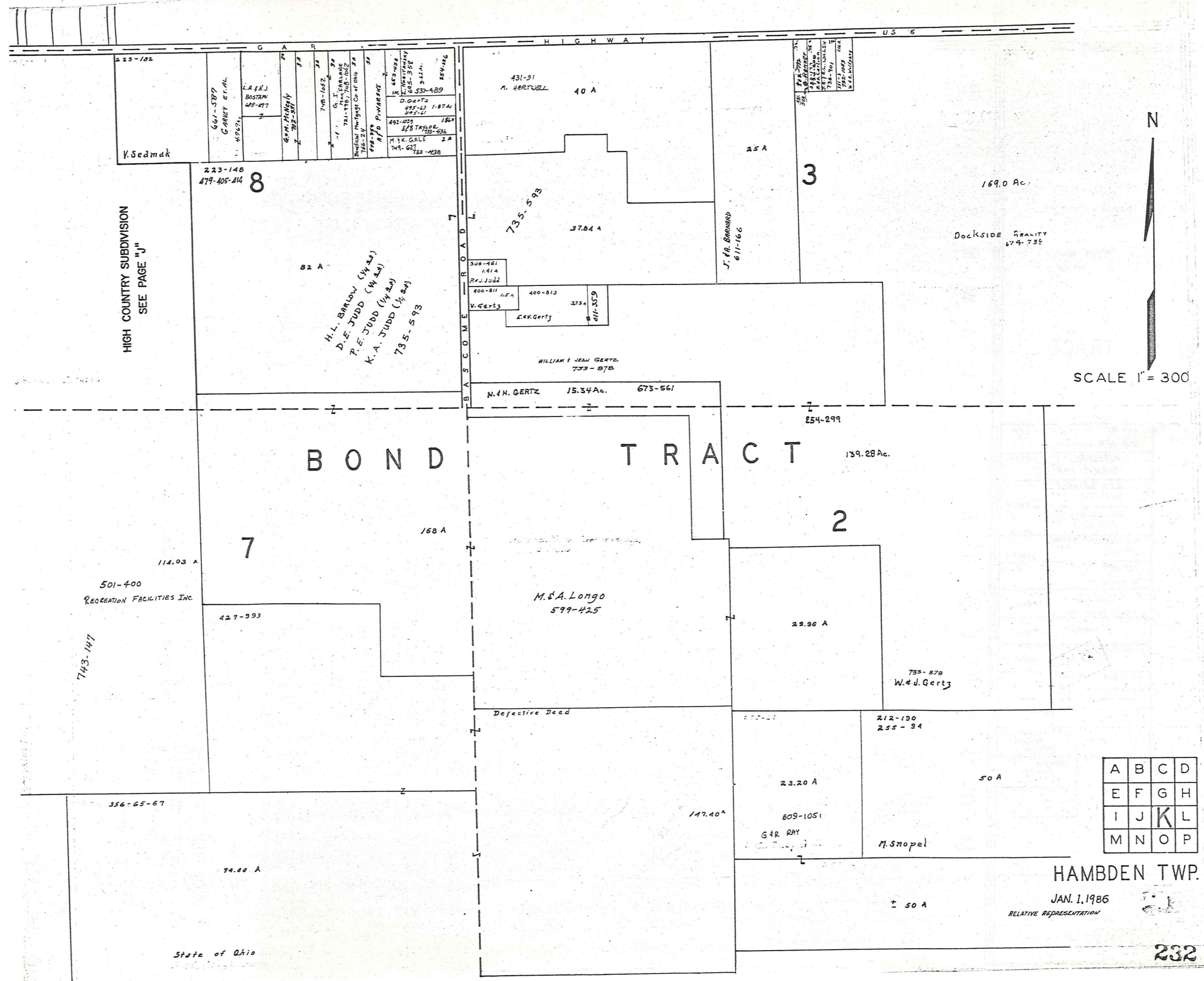
A. STEWART
670-94

A. STEWART
670-94

A. STEWART
670-94

A. STEWART
670-94

A. STEWART
670-94



HIGH COUNTRY SUBDIVISION
SEE PAGE "J"

501-400
RECREATION FACILITIES INC.

743-147

356-65-67

State of Ohio

BOND TRACT

H.L. BARKLOW (1/4 A)
D.E. JUDD (1/4 A)
P.E. JUDD (1/4 A)
K.A. JUDD (1/4 A)
735-593

Defective Deed

DOCKSIDE REALTY
674-735

A	B	C	D
E	F	G	H
I	J	K	L
M	N	O	P

HAMB DEN TWP.

JAN. 1, 1986

RELATIVE REPRESENTATION

3

170.00 A.
Docksida Realty
679-738

BOND TRACT

R O A D
T O W N
S H I P
L L E
V I L L E
M O N T
P

2

647-435	5A.
D.M. & D.M. CORWEN	
430-352	4.98A.
R. & B. Grant	
R. & D. SUSTERIC	
657-261	4.98A.
A & E CROMBIE II	
657-263	4.98A.
G. M. NEAL & M. R. HARWELL	
755-1127	4.98Ac.
257-217	
R. Kavaras	
460-398	4.98Ac.
M. & H. Tomasin	
460-480	4.98Ac.
DIC SAE IGA	
621-111	4.98Ac.
424-826	880-177
A. & M. Burnett	
MARK & ALICE L. NOCAB	4.98Ac.
726-586	

212-190
255-94

50 A.

CYNDE C. & CONNIE TOWNAL
Ballash
705-875
712-729
750-540
3.027 Ac.

M. Snopel

G. & R. RAY
609-1051

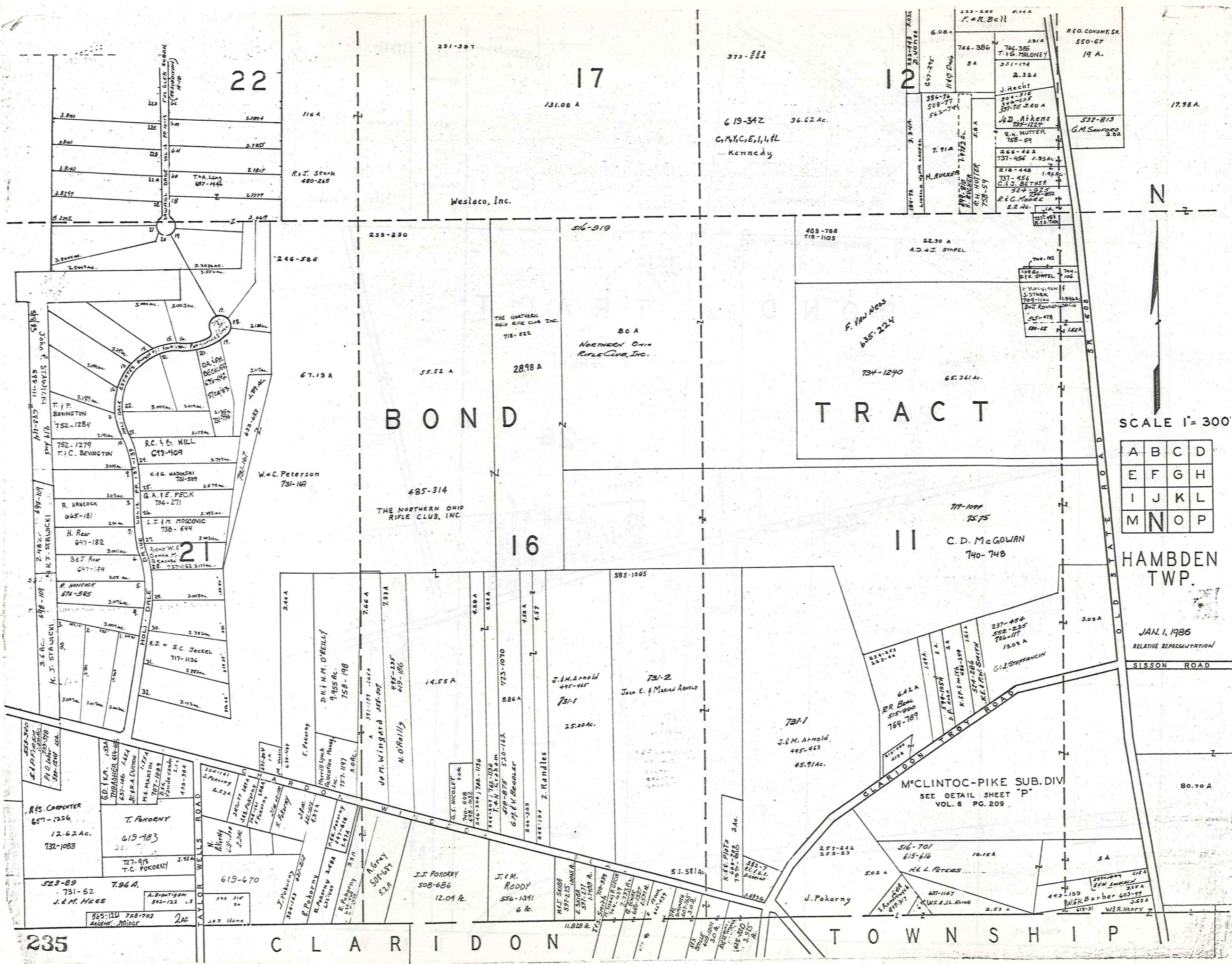
50 Ac.



SCALE 1" = 300'
RELATIVE REPRESENTATION

A	B	C	D
E	F	G	H
I	J	K	L
M	N	O	P

HAMB DEN TWP.
JAN 1 1986



N

SCALE 1" = 300'

A	B	C	D
E	F	G	H
I	J	K	L
M	N	O	P

HAMB DEN TWP.

JAN. 1, 1986
RELATIVE REPRESENTATION

SISSON ROAD

235

CLARIDON

TOWNSHIP

McCLINTOC-PIKE SUB. DIV.
SEE DETAIL SHEET "P"
VOL. 6 PG. 209

BOND

TRACT

16

17

12

22

21

Weslaco, Inc.

80 A
NORTHERN OHIO
RIFLE CLUB, INC.

THE NORTHERN OHIO
RIFLE CLUB, INC.

F. Van Ness
635-224

C.D. McGOWAN
740-748

John E. & Marian Arnold
731-2

J.M. Arnold
495-443
45.91 AC.

J.J. POKORNY
508-686
12.04 AC.

J.C.M. RODDY
556-1341
6 AC.

J. Pokorny

W.S.K. Barber 605-99
J.G.S.A.

R.S. CARPENTER
657-1226
12.62 AC.
732-1083

T. POKORNY
619-483

T.C. POKORNY
727-919

J.E.M. HILLS
731-52

A. Brantingham
502-122 1.5

585-124 728-703
44th St. Minor

619-670

619-470

619-470

619-470

619-470

619-470

619-470

619-470

619-470

619-470

619-470

619-470

619-470

619-470

619-470

619-470

619-470

619-470

619-470

619-470

619-470

619-470

619-470

619-470

619-470

619-470

619-470

619-470

619-470

619-470

619-470

619-470

619-470

619-470

619-470

619-470

619-470

619-470

619-470

619-470

619-470

619-470

619-470

619-470

619-470

619-470

619-470

619-470

619-470

619-470

619-470

619-470

619-470

619-470

619-470

619-470

619-470

619-470

619-470

619-470

619-470

619-470

619-470

619-470

619-470

619-470

619-470

619-470

619-470

619-470

619-470

619-470

619-470

619-470

619-470

619-470

619-470

619-470

619-470

619-470

619-470

619-470

619-470

619-470

619-470

619-470

619-470

619-470

619-470

619-470

619-470

619-470

619-470

619-470

619-470

619-470

619-470

619-470

619-470

619-470

619-470

619-470

619-470

619-470

619-470

619-470

619-470

619-470

619-470

619-470

619-470

619-470

619-470

619-470

619-470

619-470

619-470

619-470

619-470

619-470

619-470

619-470

619-470

619-470

619-470

619-470

619-470

619-470

619-470

619-470

619-470

619-470

619-470

619-470

619-470

619-470

619-470

619-470

619-470

619-470

619-470

619-470

619-470

619-470

619-470

619-470

619-470

619-470

619-470

619-470

619-470

619-470

619-470

619-470

619-470

619-470

619-470

619-470

619-470

619-470

619-470

619-470

619-470

619-470

619-470

619-470

619-470

619-470

619-470

619-470

619-470

619-470

619-470

619-470

619-470

619-470

619-470

619-470

619-470

619-470

619-470

619-470

619-470

619-470

619-470

619-470

619-470

619-470

619-470

619-470

619-470

619-470

619-470

619-470

619-470

619-470

619-470

619-470

619-470

619-470

619-470

619-470

619-470

619-470

619-470

619-470

619-470

619-470

619-470

619-470

619-470

619-470

619-470

619-470

619-470

619-470

619-470

619-470

619-470

619-470

619-470

619-470

619-470

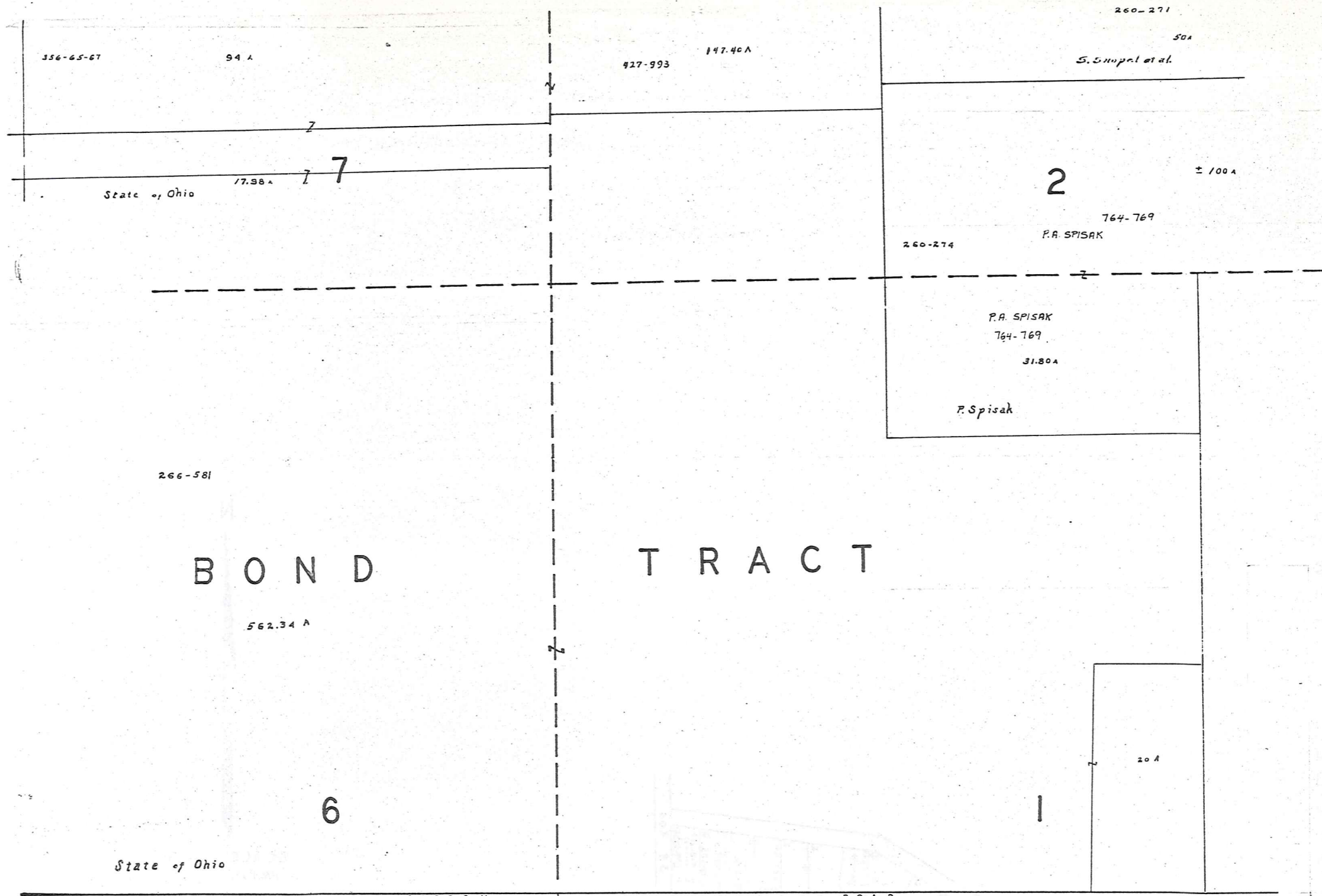
619-470

619-470

619-470

619-470

61



BOND TRACT

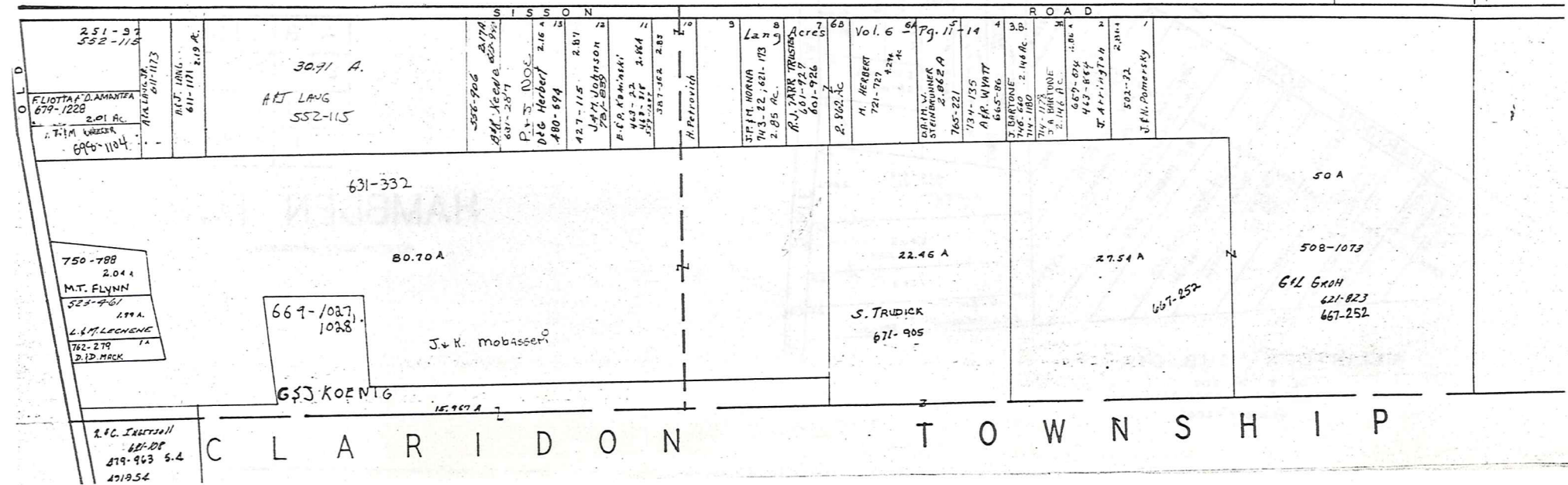


SCALE 1" = 300'

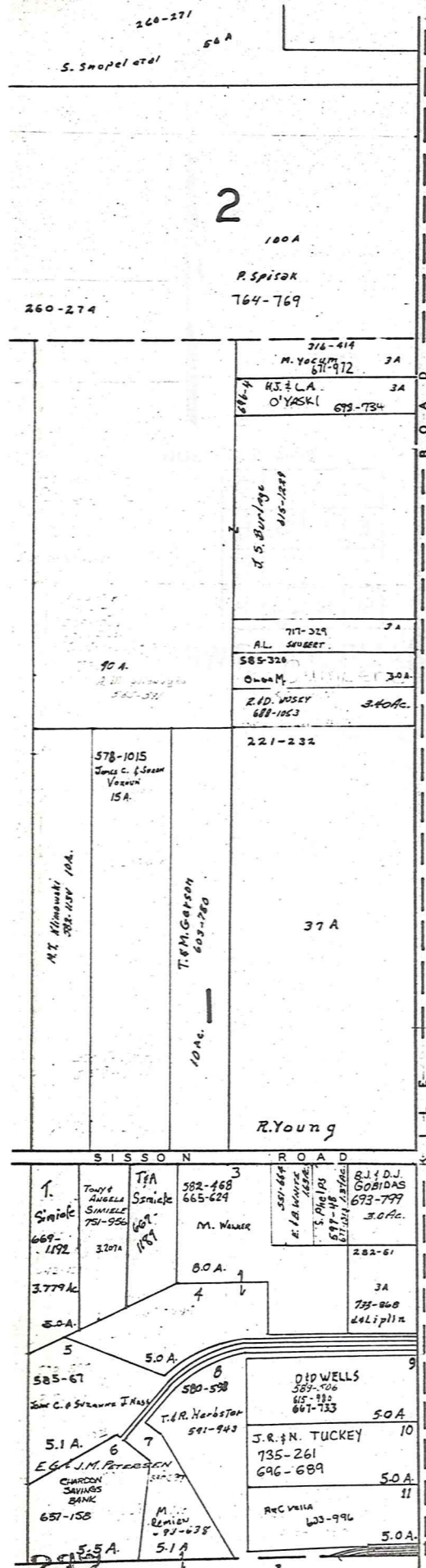
A	B	C	D
E	F	G	H
I	J	K	L
M	N	O	P

HAMBDEN TWP.

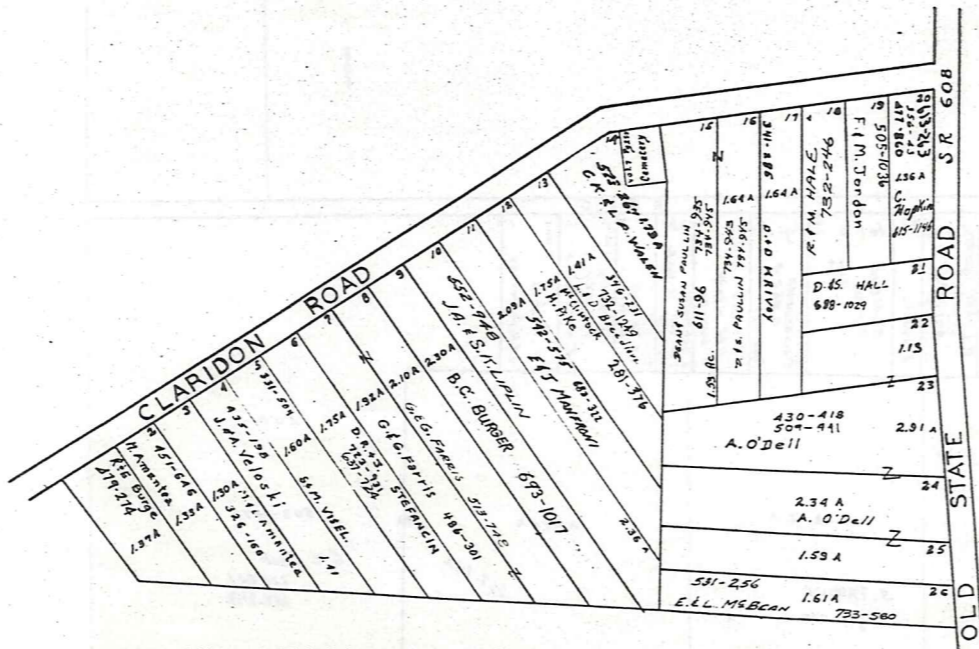
JAN. 1, 1986
RELATIVE REPRESENTATION



CLARIDON TOWNSHIP



MONTVILLE TOWNSHIP



McCLINTOCK SUB. DIV.
 VOL. 6 PG. 209
 LOT 6 & 11 BOND TR.
 Scale 1"=200'



SCALE 1" = 300'
 JAN. 1, 1986

A	B	C	D
E	F	G	H
I	J	K	L
M	N	O	P

HAMB DEN TWP.

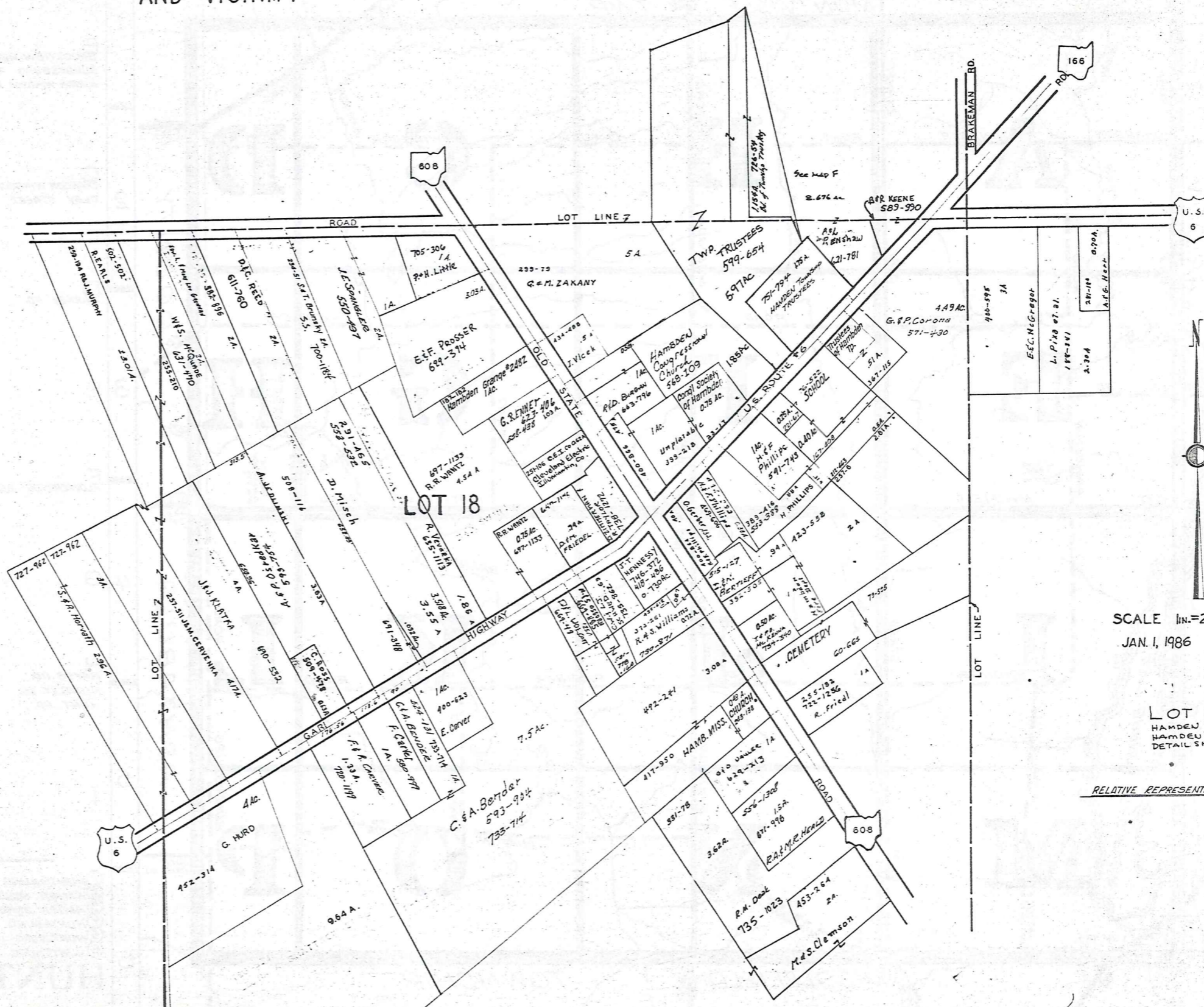
RELATIVE REPRESENTATION

CLARIDON TOWNSHIP

HAMB DEN CENTER AND VICINITY

HAMB DEN TP.

HAMB DEN CENTER AND VICINITY



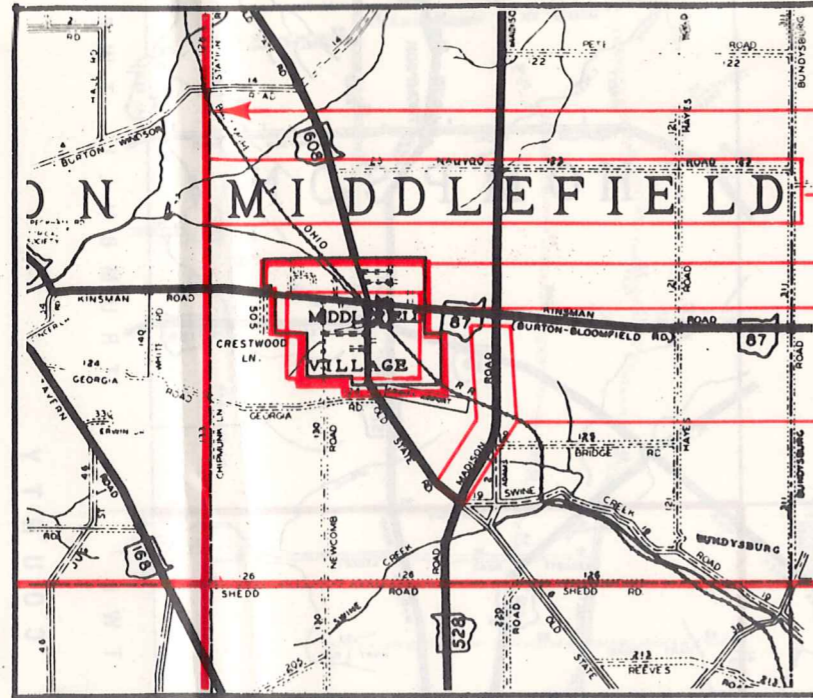
SCALE 1in.=25ch. or 165ft.
JAN. 1, 1986

LOT 18
HAMB DEN TWP.
HAMB DEN CENTER
DETAIL SHEET 7CTR.

RELATIVE REPRESENTATION

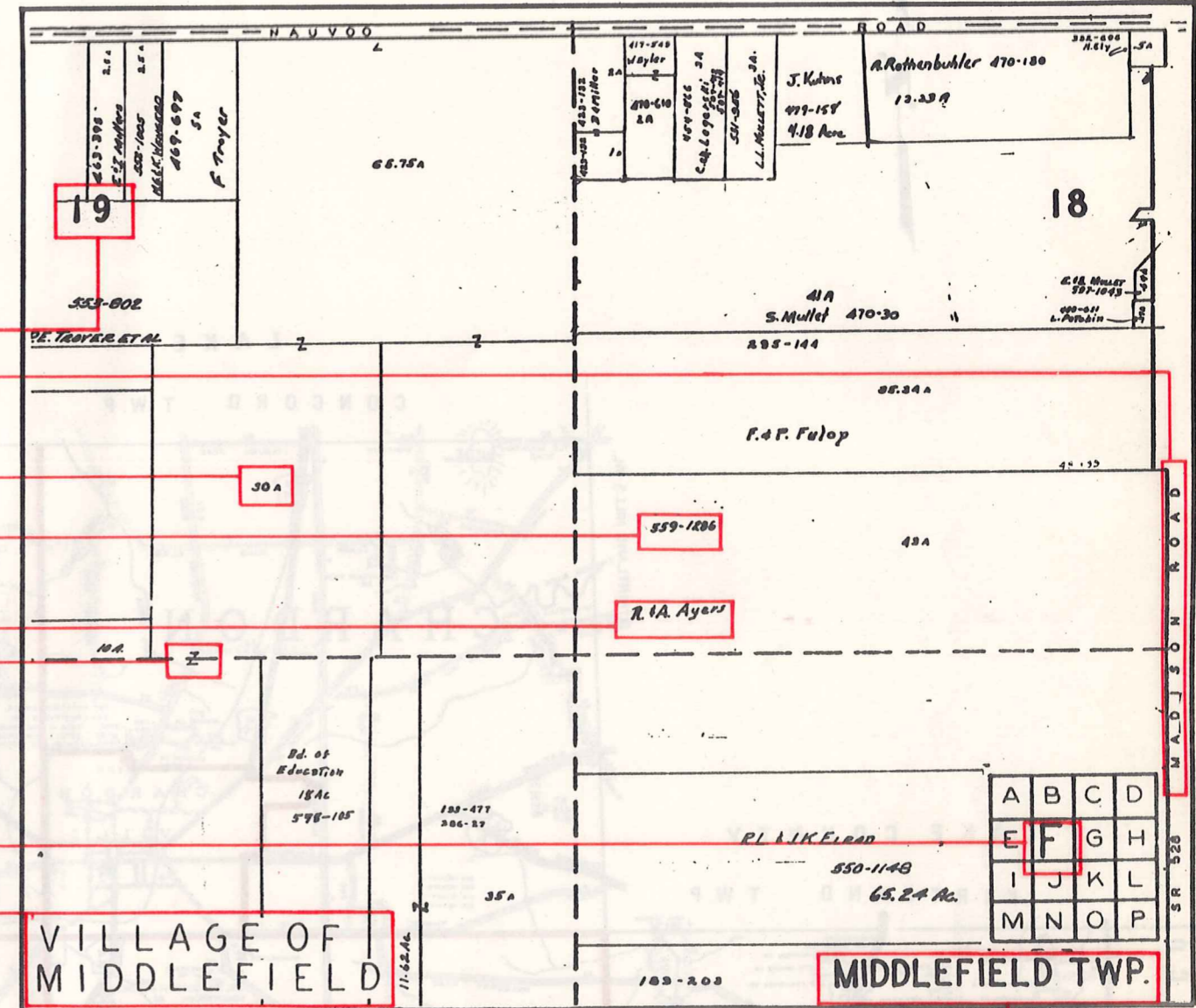
Explanation and Use Sheet for Geauga County, Ohio

SAMPLE (PARTIAL) COUNTY INDEX MAP



- Township Boundary
- Township Name
- Village Boundary
- Village Name
- Tract Lot Number
- Street Name
- Acreage
- Deed Book & Page
- Owners Name
- Denotes Continous Ownership

SAMPLE (PARTIAL) MAP PAGE



- Map Page Number
- Village Name
- Village Boundary
- Township Name

SAMPLE (PARTIAL) MUNICIPALITY INDEX MAP



- Street Name
- Village Name
- Township Name

USE OF THE MAP VOLUME

1. LOCATE THE GENERAL AREA OF INTEREST ON THE COUNTY INDEX MAP, ATLAS PAGE 'B', AND NOTE THE MUNICIPALITY NAME (TOWNSHIP OR VILLAGE).
2. REFER TO THE TABLE OF CONTENTS, ATLAS PAGE 'C', AND NOTE THE BEGINNING ATLAS PAGE NUMBER FOR THE MUNICIPALITY OF INTEREST.
3. TURN TO THE PAGE INDICATED. ON THIS PAGE WILL APPEAR AN INDEX MAP FOR THAT MUNICIPALITY.
4. LOCATE THE GENERAL AREA OF INTEREST AND NOTE THE MAP PAGE NUMBER. THIS MAY BE EITHER A LETTER OR A NUMBER.
5. MAP PAGES ARE IN ALPHABETICAL (OR NUMERICAL) SEQUENCE FOLLOWING THE MUNICIPALITY INDEX MAP. FOLLOW SEQUENCE TO THE MAP PAGE INDICATED.
6. LOCATE SPECIFIC PARCEL OF INTEREST AND NOTE THE DESIRED INFORMATION.

NOTE: ON SOME MAPS YOU MAY BE REFERRED TO A DETAIL SHEET SHOWING AN ENLARGEMENT OF THE AREA. THESE MAPS ARE FOUND AT THE END OF THE REGULAR MAP PAGES IN EACH MUNICIPALITY IN EITHER ALPHABETICAL OR NUMERICAL SEQUENCE.

NOTE: CHARDON VILLAGE HAS TITLE SHEETS. TO LOCATE OWNERS NAME, NOTE THE PARCEL NUMBER, REFER TO THE TITLE PAGE FOLLOWING THE MAP OF INTEREST, FOLLOW NUMERICAL SEQUENCE TO THE PARCEL NUMBER OF INTEREST AND NOTE THE DESIRED INFORMATION. IN ALL OTHER MUNICIPALITIES THE OWNERS NAME APPEARS ON THE MAP PAGE.

This book is the property of REAL ESTATE DATA, INC. and is distributed by REDI under a leasing arrangement requiring return to REDI upon termination of the lease. REDI reserves the right to reclaim this book if found in the possession of any firm or person where possession was obtained through any unauthorized source.